

# TUTORIAL DE DESCARGA E INSTALACIÓN DE XILINX ISE Y MODELSIM

1. Entrar en la web [www.xilinx.com](http://www.xilinx.com).

En la columna *Products & Services*, hacer clic en *Design Tools*.

The screenshot shows the Xilinx website interface. At the top right, there are links for [Language](#), [Documentation](#), [Downloads](#), and [Contact Us](#). Below these is a search bar with the text "Enter Keyword/Part#" and a "Search" button. The Xilinx logo is on the left. A navigation bar contains links for [Technology Solutions](#), [Products & Services](#), [Market Solutions](#), [Support](#), [Online Store](#), and [About Xilinx](#). A large banner for the "XtremeDSP™ Tools Package" is visible, featuring a price of \$1,495 and a "Start Designing for Less" button. Below the banner, there are two promotional boxes: "in-depth Virtex-5 FPGA training... Speedway Workshops from Avnet" with a "Register Now" button, and "featured product... Great Deals on Spartan-3 Generation FPGA Kits" with an "Order Today" button. At the bottom, a navigation menu lists four categories: **Technology Solutions**, **Products & Services**, **Market Solutions**, and **Support**. Under **Products & Services**, the link "Design Tools" is circled in red.

Technology Solutions	Products & Services	Market Solutions	Support
DSP	Silicon Devices	Aerospace & Defense	Download Center
Embedded Processing	<b>Design Tools</b>	Automotive	Support by Device
Connectivity	Intellectual Property	Broadcast	Documentation
Memory	Boards & Kits	Consumer	Forums
Signal Integrity	Design & Support Services	Data Processing and Storage	University Program
Power	Third Party	Industrial / Scientific / Medical	
Configuration	Training	Wired Communications	
Security		Wireless Communications	

2. En el centro, hacer clic en *ISE WebPACK* para tener la misma versión que en los laboratorios.

## Design Tools — ISE Design Suite



- [Download Evaluation](#)
- [Buy ISE Design Suite](#)
- [View Technical Demos](#)
- [Subscribe to Free Xilinx Newsletter](#)

- [Evaluate any of the products in the ISE® Design Suite 10.1! FREE for 60 days!](#)
- [What's New in the ISE Design Suite](#)

### ISE Design Suite 10.1 — Ultimate Productivity

The ISE Design Suite delivers the optimal solution for your Logic, Embedded, and DSP design.

- > Logic design - Delivering optimal timing closure for higher performance, lower power designs
- > Embedded systems – Design wizards accelerate processing development and time-to-market
- > DSP design - Flows and IP tailored for algorithm, system, and hardware developers

### Related Information

- > ISE Design Suite Resources
- > Logic Design Technologies
- > Embedded Design Technologies
- > DSP Design Technologies

### Logic Design Tools

- > [ISE Foundation™ Software](#)  
The industry's most complete programmable logic design solution
- > [ISE WebPACK™ Software](#)  
A FREE solution for your Xilinx CPLD or

### Embedded Design Tools

- > [Platform Studio and the EDK](#)  
An integrated development environment of embedded processing tools, MicroBlaze soft processor core, IP, SW libraries, and design generators

3. En la pantalla siguiente hacer click en Download ISE WebPACK.

## ISE WebPACK Software



**ISE WebPACK software is the industry's only FREE, fully featured front-to-back FPGA design solution for Linux, Windows XP, and Windows Vista.**

ISE® WebPACK™ software is the ideal downloadable solution for FPGA and CPLD design offering HDL synthesis and simulation, implementation, device fitting, and JTAG programming. ISE WebPACK provides the tools and features along with the same easy-to-use design environment as our award winning ISE Foundation™ design tools providing instant access to the ISE features and functionality at no cost. Xilinx has created a solution that allows convenient productivity by providing a design solution that is always up to date with error-free downloading and single file installation.

### Download ISE WebPACK Now!

- > [Download ISE WebPACK software for Windows and Linux](#)

### Device Family Support

- > Virtex®-5 LX, LXT, FXT, TXT
- > Virtex-4 FX, LX, SX
- > Virtex-II Pro
- > Virtex-II
- > Extended Spartan®-3A
- > Spartan-3, 3E
- > Spartan-II, IIE

- [Buy ISE Design Suite](#)
- [Request WebPACK DVD](#)
- [Subscribe to Free Xilinx Newsletter](#)

### Documentation

- [ISE Product Brief](#)
- [Tcl Reference Card](#)
  - > Software Manuals

### Training

- > [Learn ISE](#)

### Related Information

- > ISE Operating System Support
- > Memory Recommendations

4. Si todavía no estás registrado en Xilinx es necesario hacerlo. Es totalmente gratuito y solamente es necesario rellenar un formulario.

Language | Documentation | Downloads | Contact Us

Sign in to access account

Enter Keyword/Part # Search

Advanced Search

Technology Solutions Products & Services Market Solutions Support Online Store About Xilinx

### Sign in to Xilinx

User ID

Password

[Forgot your password?](#)

**Don't have a Xilinx account yet?**

- > Choose to receive important news and product information
- > Gain access to special content
- > Personalize your web experience on Xilinx.com

5. Rellenar el siguiente formulario (todos los campos son obligatorios), y hacer clic en *Create Account*. La dirección de correo tiene que ser válida, para poder recibir después la confirmación.

Language | Documentation | Downloads | Contact Us

Sign in to access account

Enter Keyword/Part # Search

Advanced Search

Technology Solutions Products & Services Market Solutions Support Online Store About Xilinx

### Create Account and Password

To complete your account creation, a validation e-mail will be sent to you.

Fields marked with an asterisk \* are required.

User ID *	<input type="text"/>
Email Address *	<input type="text"/>
Password *	<input type="password"/>
Re-type Password *	<input type="password"/>
First Name *	<input type="text"/>
Last Name *	<input type="text"/>

You may send me product and software email updates \*  Yes  No

**Instructions**

Your password must be at least 7 characters long and contain at least 1 number.



[Sign in to access account](#)

Enter Keyword/Part #

[Advanced Search](#)

### Activate Your Account

Your Xilinx.com account has been created but not activated. An E-mail has been sent to [your email address](#). Please follow the instructions in the E-mail to activate your account and continue with the registration process.

Thank you,  
Xilinx, Inc.

Esperar a que nos envíen un correo la cuenta que hemos indicado.

5. Cuando llegue el e-mail, hacer clic en un link que empieza por  
*<https://secure.xilinx.com/webreg>*

Dear Pepito Pérez Pérez,

To activate your Xilinx.com account, visit the following link within 30 days and log in with your User ID:  
<https://secure.xilinx.com/webreg/activate.do?languageID=1&key=.re05f91933>

User ID: pepito\_perez

If you don't activate your account within 30 days, you must re-register.  
If you did not attempt to create an account, you may ignore this email or [report this incident](#).

Sincerely,  
Xilinx Customer Service

6. Aparecerá la siguiente pantalla, introducir de nuevo el nombre de usuario y la contraseña y hacer clic en *Sign In*.

### Sign in to Xilinx

User ID	<input type="text"/>
Password	<input type="password"/>
	<a href="#">Forgot your password?</a>
	<input type="button" value="Sign In"/>

Your Xilinx.com account is active. Please login to register for group : **esd\_oms**

7. Aparecerá un nuevo formulario. Completar los campos con \* (son obligatorios) y hacer clic en *Next*.

### Xilinx Electronic Fulfillment

US export regulations require that your shipping address be verified before Xilinx can fulfill your request. Please provide accurate and complete information for immediate processing.

Fields marked with an asterisk \* are required.

Email Address	<input type="text"/>
<a href="#">Update profile</a>	
Department	<input type="text"/>
Industry *	Select one <input type="button" value="v"/>
Address 1 *	<input type="text"/>
Address 2	<input type="text"/>
City *	<input type="text"/>
Postal/Zip Code *	<input type="text"/>
Country *	Select One <input type="button" value="v"/>
Phone (include area code) *	<input type="text"/>
State/Province	Select One <input type="button" value="v"/> <input type="text"/> <a href="#">help</a>
Fax (include area code)	<input type="text"/>
Company/Organization *	<input type="text"/>

8. Marcar la opción ISE WebPACK (Free Download). Pulsar *Next*.

Language | Documentation | Downloads | Contact Us

**XILINX** juan.crx (Sign Out)

Enter Keyword/Part #  [Advanced Search](#)

Technology Solutions | Product & Services | Market Solutions | **Support** | Online Store | About Xilinx

Troubleshoot | Contact Support | **Downloads** | Documentation | Quality | Answers | Forums |

Home : [Support](#) : Product Registration and Download

**Product Registration and Download**

**Software Reg**

[Help](#)

Please select the product you wish to evaluate from the list below and click "Next". If you need assistance, please contact [Xilinx Software Customer Service](#).

**Select Products**

Evaluation / Free Products (optional) ?	<input checked="" type="checkbox"/> ISE WebPACK 10.1 (Free Download)
	<input type="checkbox"/> ISE Foundation 10.1 (Free 60-Day Evaluation)
	<input type="checkbox"/> Embedded Development Kit (EDK) 10.1 (Free 60-Day Evaluation)
	<input type="checkbox"/> ChipScope Pro 10.1 with Serial I/O Toolkit License Key (Free 60-Day Evaluation)
	<input type="checkbox"/> System Generator for DSP and AccelDSP Synthesis Tool 10.1 (Free 60-Day Evaluation)
	<input type="checkbox"/> PlanAhead Design Analysis Tool 10.1 (Free 60-Day Evaluation)
	<input type="checkbox"/>

9. Anotar la referencia Registration ID y pulsar Download. (El navegador debe permitir descargar ficheros).

Language | Documentation | Downloads | Contact Us

**XILINX** (Sign Out)

Enter Keyword/Part #  [Advanced Search](#)

Technology Solutions | Product & Services | Market Solutions | **Support** | Online Store | About Xilinx

Troubleshoot | Contact Support | **Downloads** | Documentation | Quality | Answers | Forums |

Home : [Support](#) : Product Registration and Download

**Product Registration and Download**

**Software Reg**

**Download Products** [Help](#)

Download

**Registration ID: 1B56AGZLJMJSWSEX**  
Enter this Registration ID into the ISE Design Suite Installation Program.

WebInstall Client (47.6 MB)

Download Alternatives:

Download Files Individually

Each product must be downloaded and installed separately.

Product	Details	Files
ISE Webpack 10.1	<a href="#">2.25 GB</a>	<a href="#">Download</a>

Request a DVD

Included Products

**Evaluation Products**

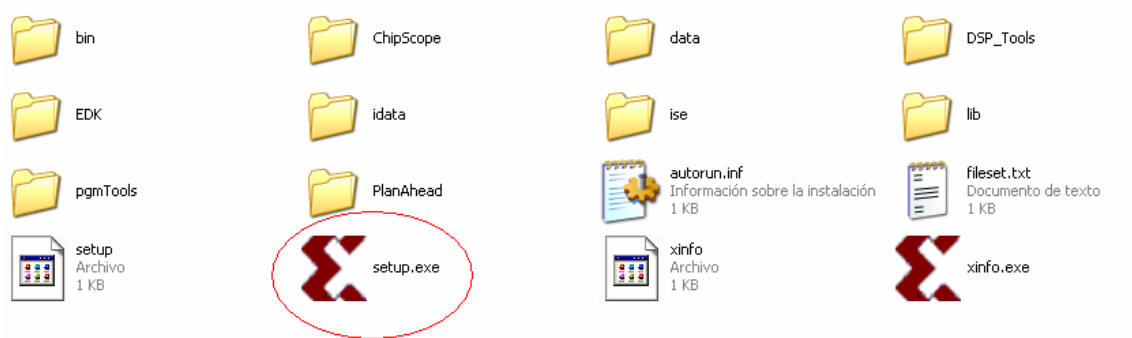
✓ ISE WebPACK 10.1 (Free Download)

Documentation The following documents include information for all Eval'd Products:

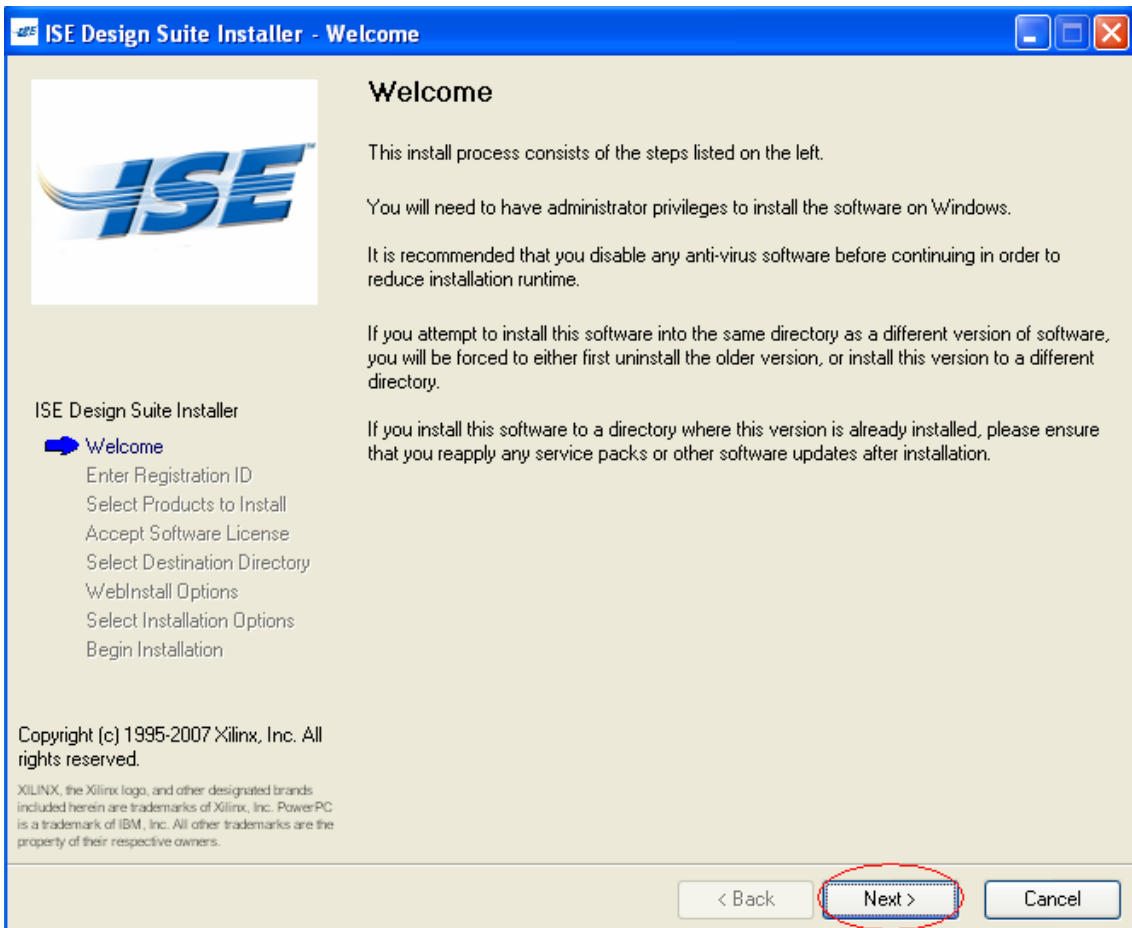
10. Descomprimir la carpeta 10.1\_Webinstall.zip.



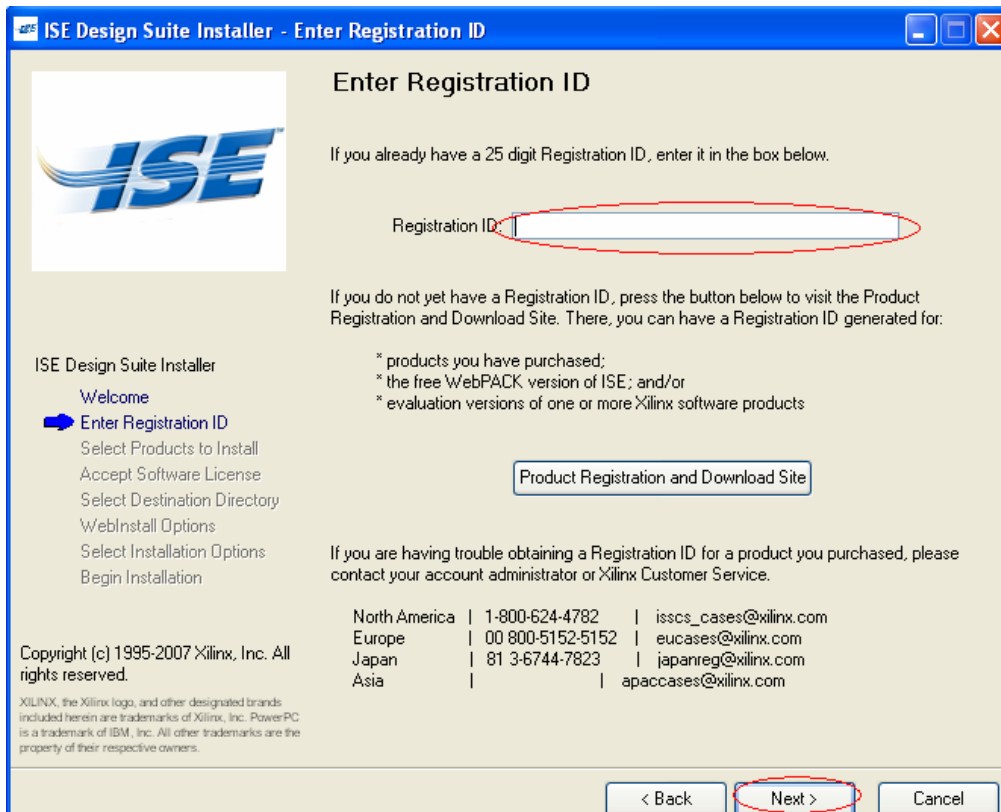
## Ejecutar setup.exe



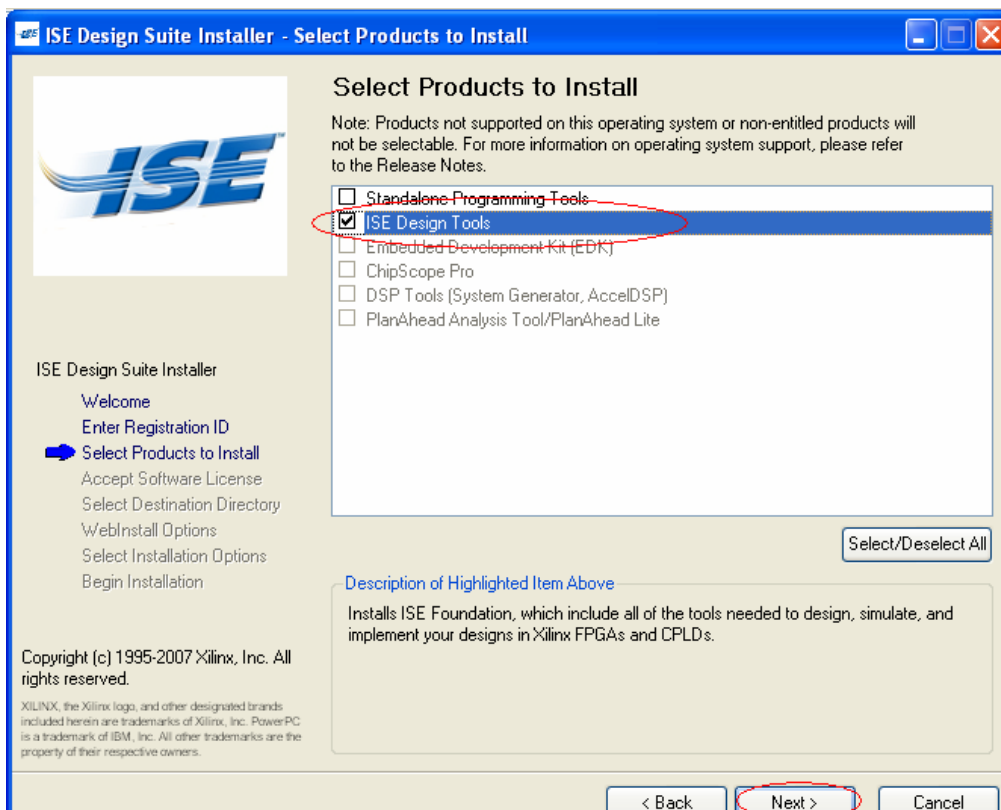
## 11. Nos aparece una pantalla de bienvenida a la instalación. Pulsamos *Next*



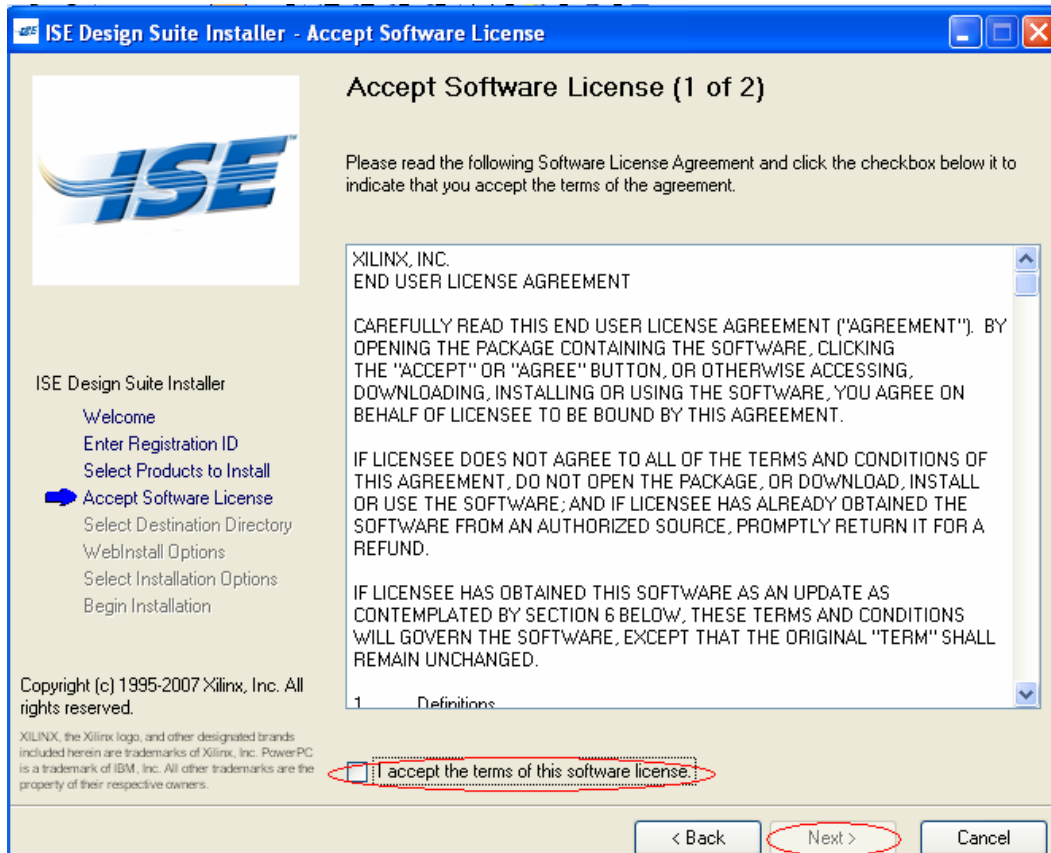
## 12. Introducir el código *Registration ID* recibido anteriormente. Pulsamos *Next*.



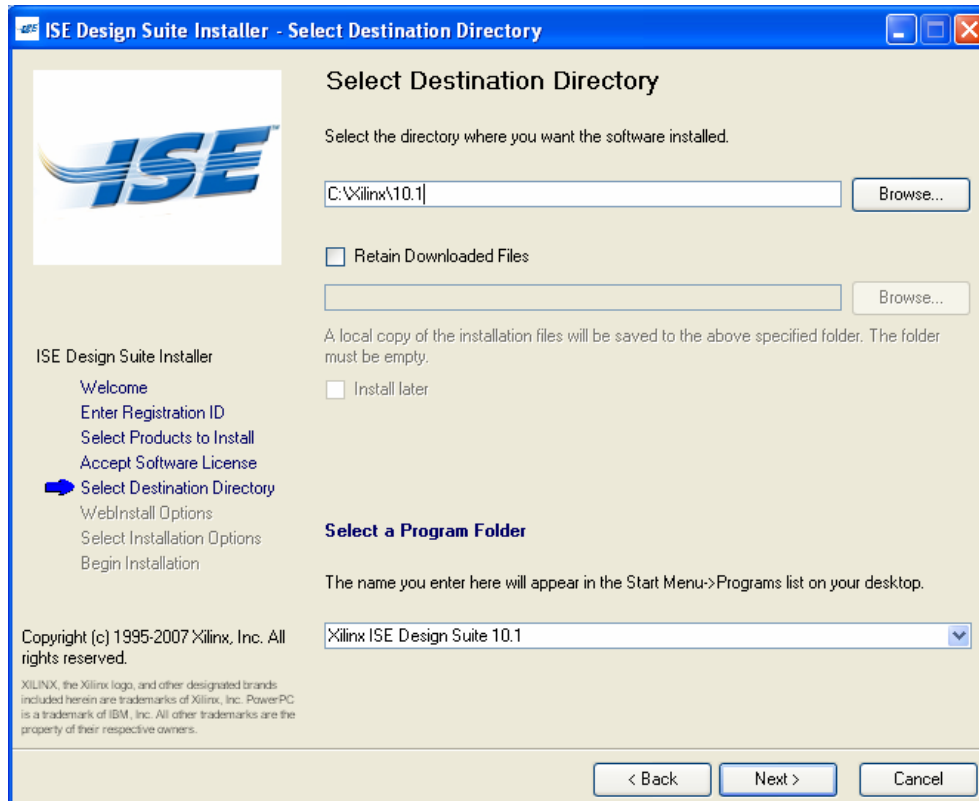
## 13. Seleccionar ISE Design Tools (Por defecto).



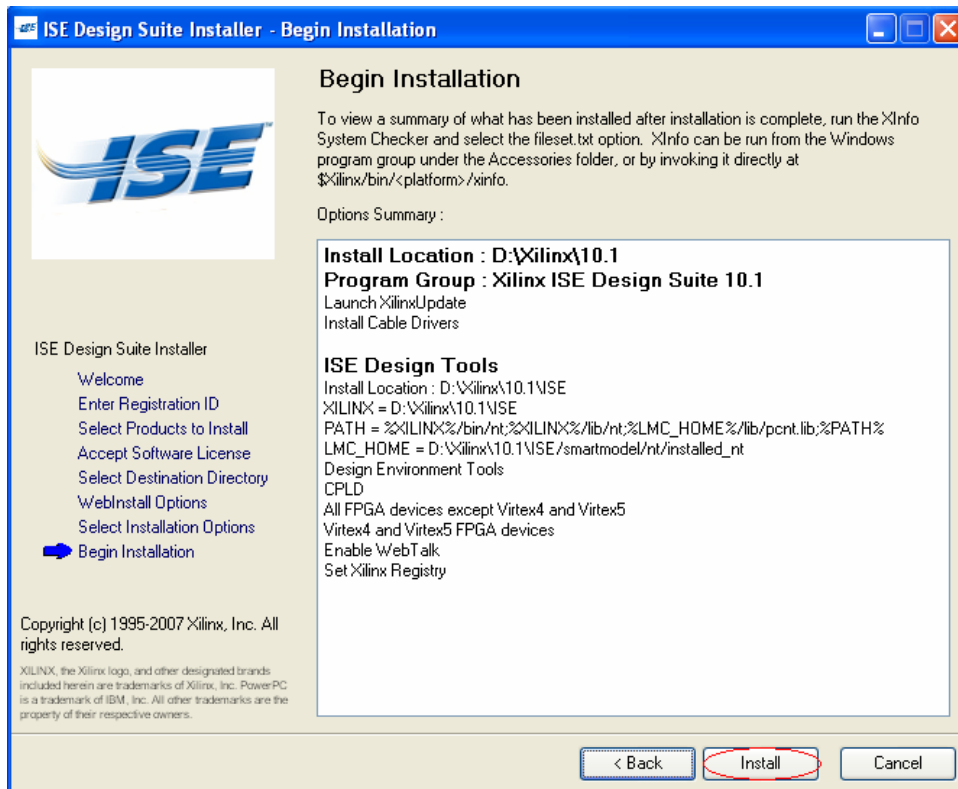
Aceptar las 2 licencias correspondientes.



Seleccionar el directorio de destino.



Dejad las opciones por defecto en las 5 siguientes pantallas de *Installation Options*  
Continuar haciendo click en *Install*



La instalación tardará bastante en descargarse, dado su gran tamaño. (el último 4% tarda muchísimo)



En este punto ya se tiene la herramienta de Xilinx ISE Design Suite funcionando. Esta herramienta incluye un simulador interno (ISE Simulator), por lo que ModelSim no es estrictamente necesario. Además, ModelSim necesita pedir un fichero de licencia (también gratuito) y configurarlo.

**14.** Para descargar ModelSIM Xilinx Edition III (MXE-III) volver a la página principal de Xilinx.com entrando por *Logic Design Tools* como se hizo anteriormente. Esta vez seleccionar *ModelSIM Xilinx Edition III (MXE-III)*

**Logic Design Tools**

- > [ISE Foundation™ Software](#)  
The industry's most complete programmable logic design solution
- > [ISE WebPACK™ Software](#)  
A FREE solution for your Xilinx CPLD or medium-density FPGA design.
- > [ChipScope™ Pro Tool](#)  
Leading-edge, real-time debug and verification tools for Xilinx FPGAs.
- > [ChipScope Pro Serial IO Toolkit](#)  
An optional add-on allowing quick and easy set up for serial IO channels.
- > [PlanAhead™ Design Analysis Tool](#)  
An intuitive environment for faster, more efficient solution for performance goals.
- > [ISE Simulator](#)  
A complete, full-featured HDL simulator integrated with ISE Foundation.
- > [ModelSim Xilinx Edition-III \(MXE-III\)](#)  
A low cost version of the industry's most popular simulation environment.
- > [ISE Classics](#)  
A FREE collection of previously released ISE software tools.

Learn more about Xilinx [Logic Design products and technologies](#)

**Embedded Design Tools**

- > [Platform Studio and the EDK](#)  
An integrated development environment of embedded processing tools, MicroBlaze soft processor core, IP, SW libraries, and design generators

Learn more about all [Embedded Design products and technologies](#)

**DSP Design Tools**

- > [System Generator for DSP](#)  
Enables development of high-performance DSP systems using products from The MathWorks, Inc.
- > [AccelDSP™ Synthesis Tool](#)  
Option to System Generator for DSP enabling a top-down MATLAB language-based DSP design methodology

Learn more about the [DSP Design products and technologies](#)

**Pulsamos Download MXE-III**

The screenshot shows the Xilinx website interface. At the top, there are navigation links for Language, Documentation, Downloads, and Contact Us. Below this is the XILINX logo and a sign-in button. A search bar is present with the text 'Enter Keyword/Part #' and a 'Search' button. A secondary 'Advanced Search' link is also visible. The main navigation menu includes Technology Solutions, Product & Services, Market Solutions, Support, Online Store, and About Xilinx. Under 'Product & Services', there are sub-links for Silicon Devices, Design Tools, Intellectual Property, Boards & Kits, Training, Services, and Third Party Alliances. The breadcrumb trail reads: Home : Products & Services : Design Tools : Logic Design : ModelSim Xilinx Edition-III. The main heading is 'ModelSim Xilinx Edition-III'. Below this, there is a 'Buy MXE-III' button and a 'Download MXE-III' button, the latter of which is circled in red. To the right, there is a 'Documentation' section with links to ModelSim XE-III Details, ModelSim XE-III FAQs, and ModelSim XE Pre-compiled Libraries. Below that is a 'Related Products' section with links to ISE Foundation Software and ISE WebPACK Software. At the bottom right, there is a 'Related Information' section with a link to ModelSim Product Comparison. On the left side, under 'Device Family Support', there are two columns of product links including Virtex™-5 LX, LXT, SXT; Virtex-4 FX, LX, SX; Virtex-II Pro; Virtex-II; Virtex-E; Virtex; Spartan™-3A DSP; Spartan-3A, 3AN; Spartan-3, 3E; Spartan-II, IIE; CoolRunner™-II; CoolRunner XPLA3; and XC9500.

15 Tras aceptar las condiciones de uso, hacer clic en *Version 6.3* para descargar el fichero *mxe\_3\_6.3c.zip* (196 MB)

Language | Documentation | Downloads | Contact Us

**XILINX**

Sign in to access account

Enter Keyword/Part# Search

Advanced Search

Technology Solutions | **Product & Services** | Market Solutions | Support | Online Store | About Xilinx

Silicon Devices | **Design Tools** | Intellectual Property | Boards & Kits | Training | Services | Third Party Alliances |

Home : Products & Services : Design Tools : Logic Design : ModelSim Xilinx Edition-III : ModelSim Xilinx Edition III Download

### ModelSim Xilinx Edition III Download

This download contains the installation for both the Full and Starter versions of MXE III. The starter version is a free evaluation version of ModelSim XE-III. In order to use the full version of this download you must either have a existing, in warranty license or purchase a license from your local distributor or the Xilinx Online Store.

**Download ModelSim**

[Version 6.3](#) (201 MB) 03/24/2008

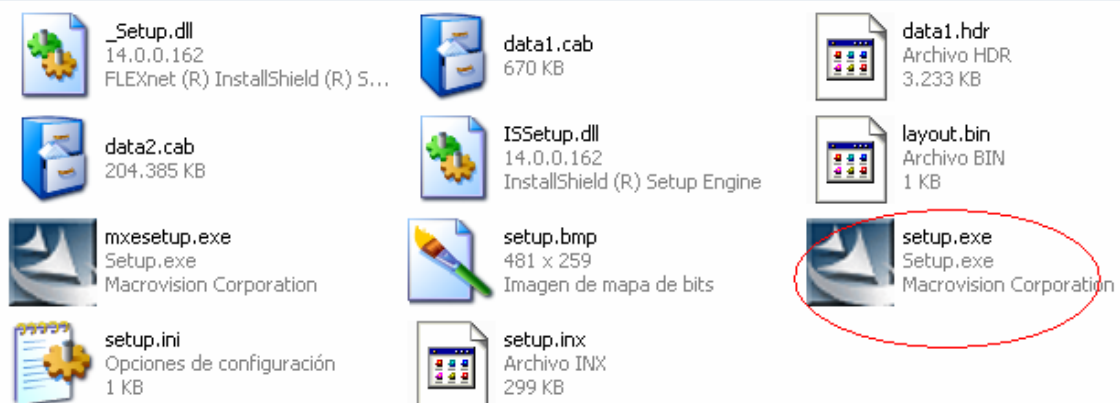
Jobs | Events | Webcasts | News | Investors | Feedback | Legal | Sitemap

© 1994-2008 Xilinx, Inc. All Rights Reserved.

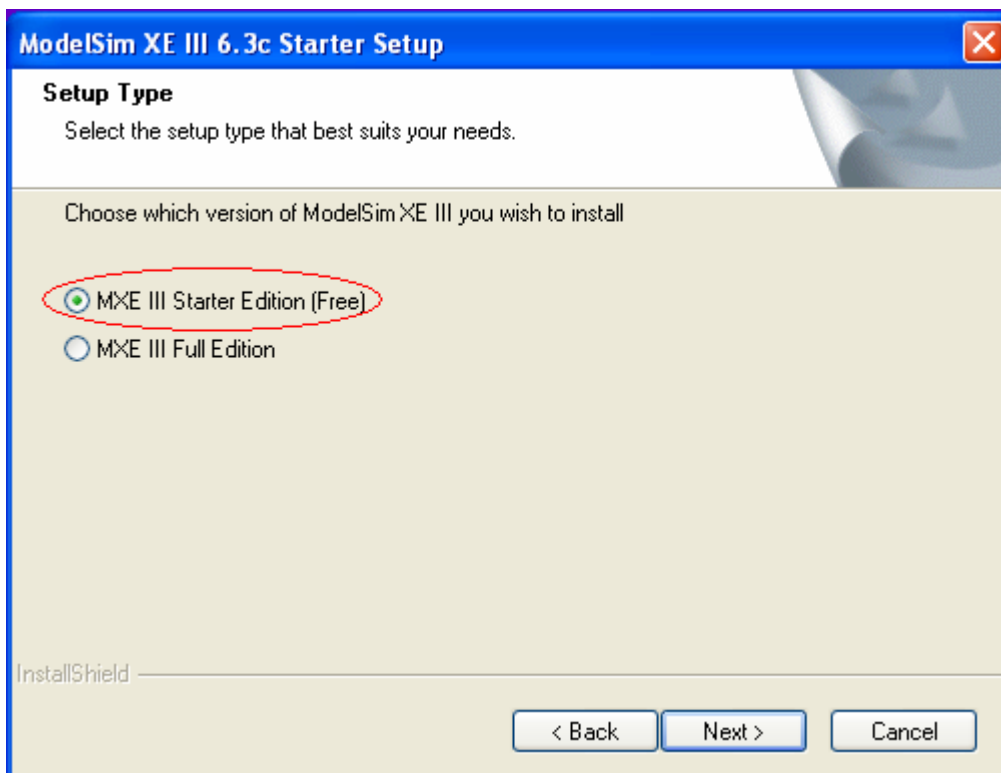
16. Una vez terminada la instalación, abrir la carpeta *mxe\_3\_6.2g*.



17 Descomprimir todos los archivos al disco duro y ejecutar *setup.exe*

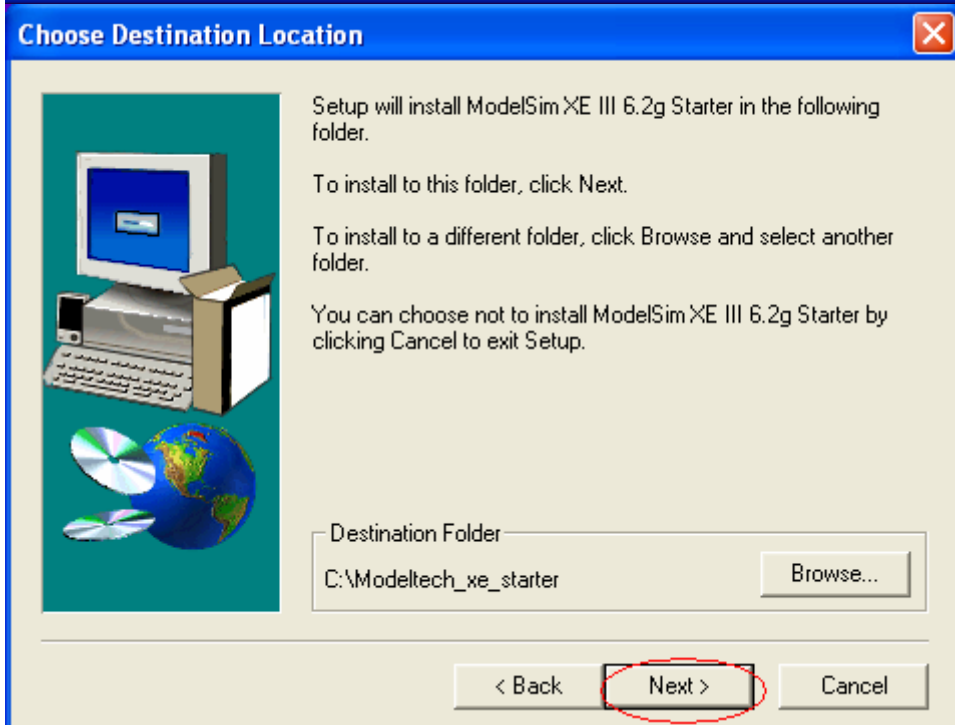
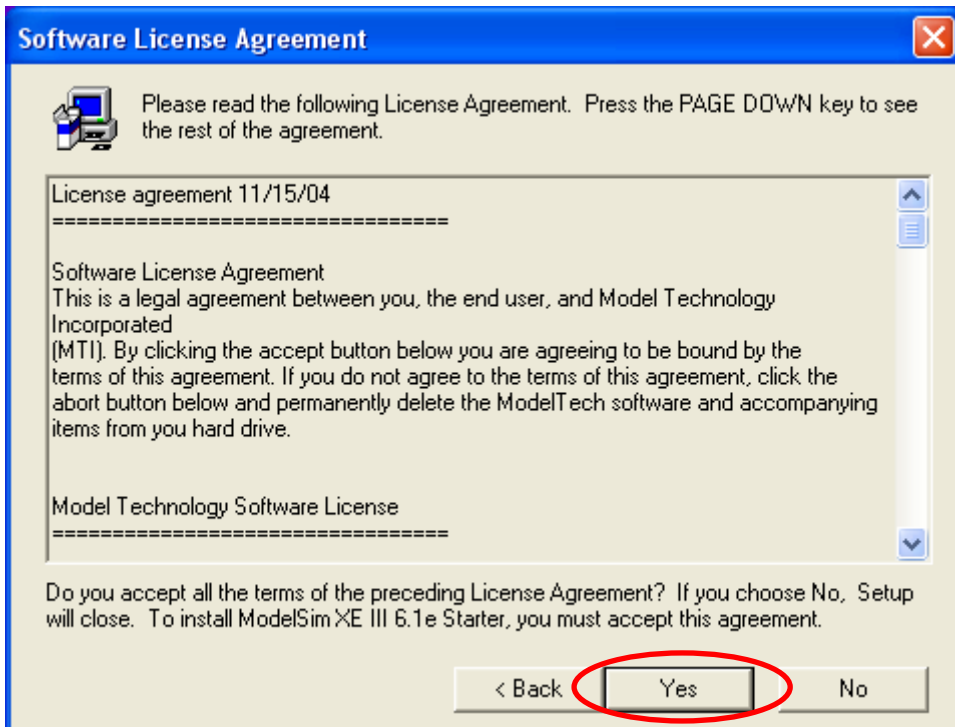


Aparecerá la siguiente pantalla donde hay que marcar la opción *MXE III Starter Edition (Free)* y hacer clic en *Next*.

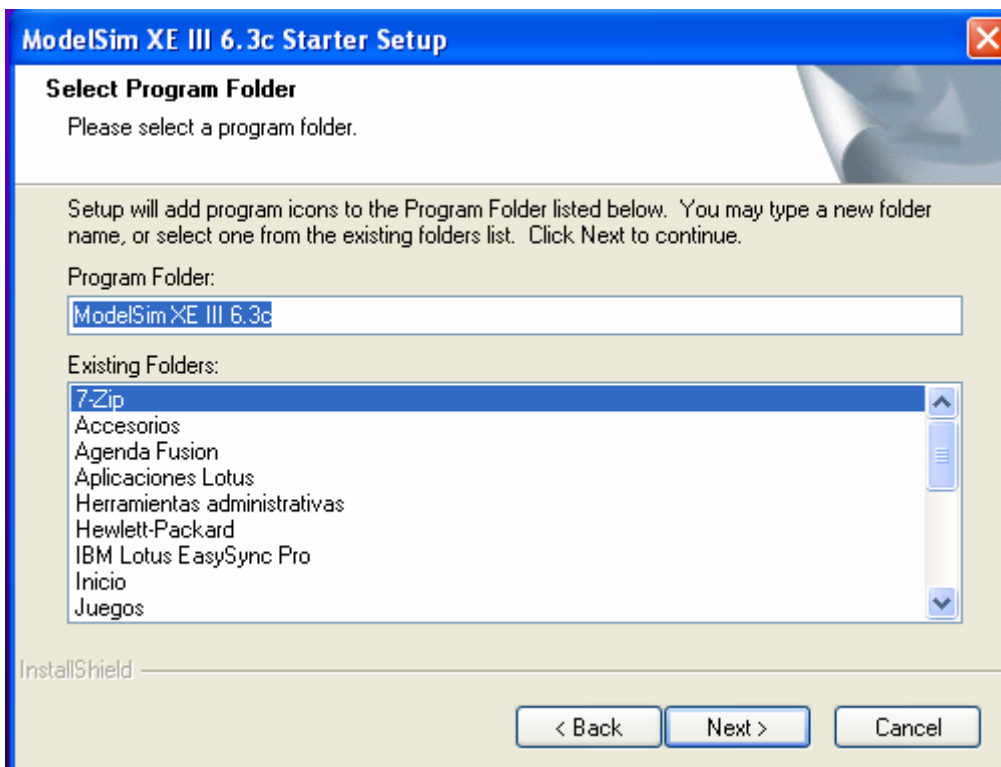
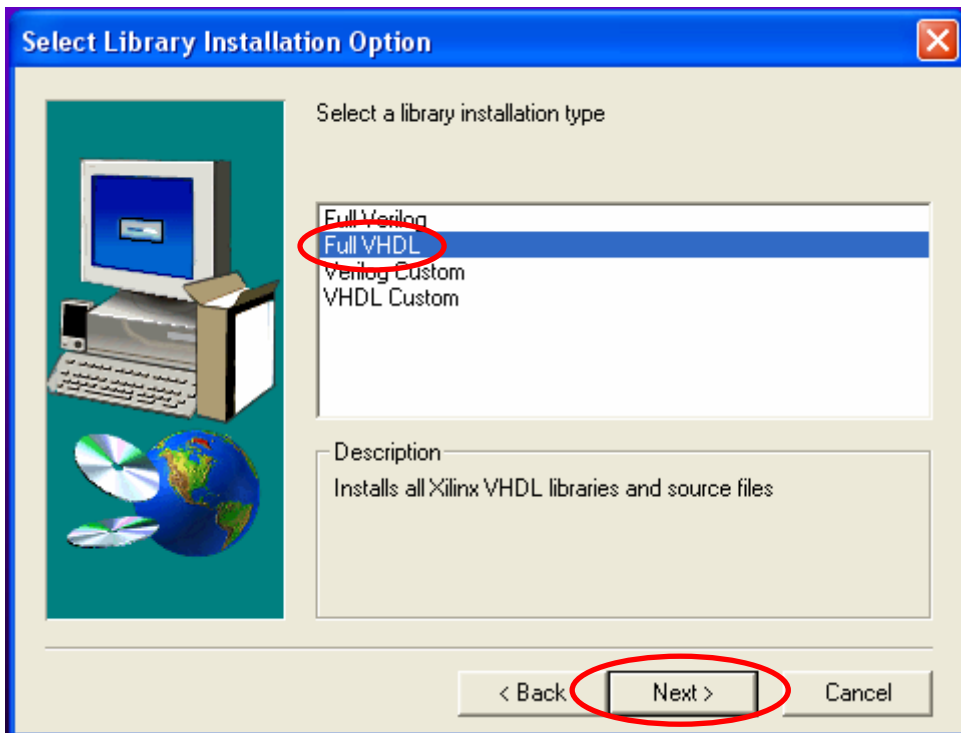


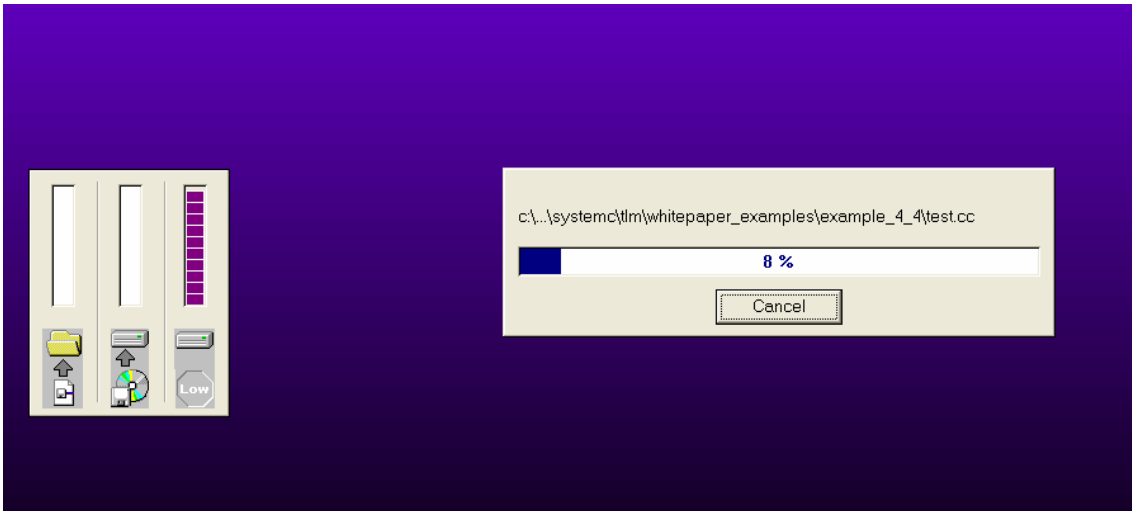
Continuar la instalación eligiendo *Next, Yes, Next*.



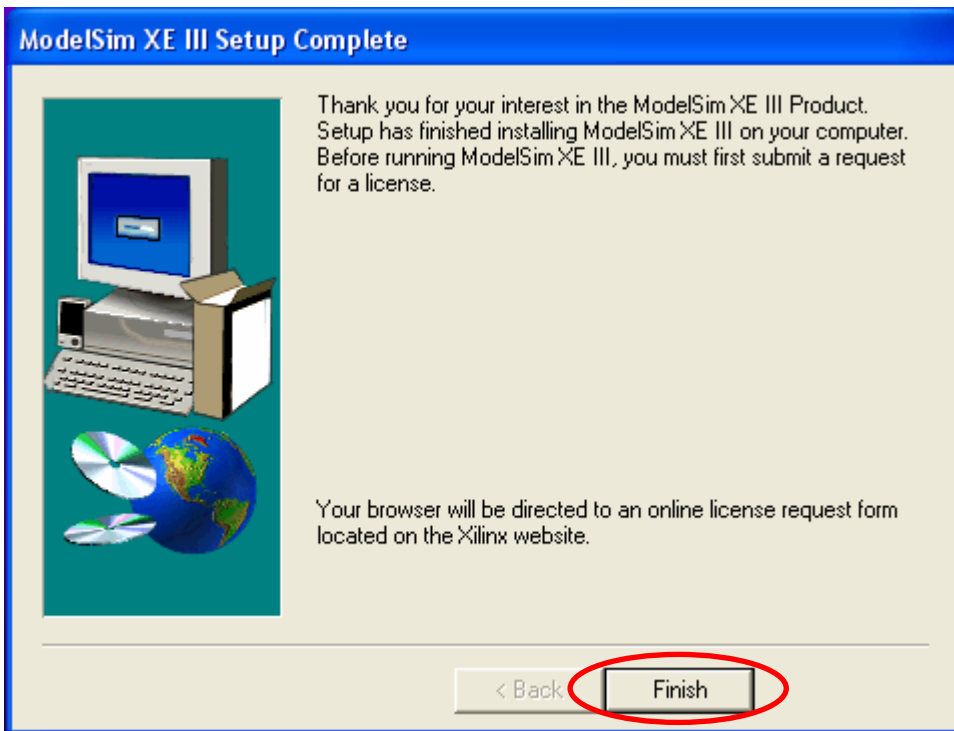


Aparecerá la siguiente pantalla, donde hay que elegir la segunda opción (*Full VHDL*) y seguir haciendo clic en *Next*.





Tras elegir si se quiere un acceso directo en el escritorio, la instalación habrá terminado. Hacer clic en *Finish*.



**18.** Se accederá automáticamente a la web de Xilinx para pedir la licencia. Hacer clic en *Continue*.



Sign in to access account

Enter Keyword/Part #

[Advanced Search](#)

## ModelSim Xilinx Edition License Request



### ModelSim™ License Request

To use this page requires that you login at [www.xilinx.com](http://www.xilinx.com).

[Continue](#)

Click 'Continue' if you've already registered. You will be prompted for your [www.xilinx.com](http://www.xilinx.com) username and password.



[Register](#)

Click 'Register' to register now at [www.xilinx.com](http://www.xilinx.com). Once you have registered, use the 'Back' button on your browser to return to this page, and then use the 'Continue' button to generate your license.

[I forgot my password](#)

Click 'I forgot my password' if you have registered before but have forgotten your password. A new password will be generated and emailed to you. Once you have the new password, use the 'Back' button on your browser to return to this page, and then use the 'Continue' button to generate your license.

Acceder introduciendo el usuario y la contraseña:



Sign in to access account

Enter Keyword/Part #

[Advanced Search](#)

### Sign in to Xilinx

User ID

Password

[Forgot your password?](#)

**Don't have a Xilinx account yet?**

- > Choose to receive important news and product information
- > Gain access to special content
- > Personalize your web experience on Xilinx.com

Rellenar el formulario (aparecen por defecto los datos introducidos al registrarse) indicando el correo donde se quiere recibir el fichero de licencia. Una vez rellenado, hacer clic en *Submit*.

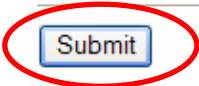
WARNING: Please use caution when registering this license.

- The license will **ONLY** be sent by email.
  - Please verify your email address.
  - Please be sure that you can receive an attachment named 'license.dat'
  - Please be sure you can accept email from **mxe\_distribution@xilinx.com**

Product : STARTER, Xilinx Edition - Starter.  
HostID: 2060b55c, Disk SerialNumber.

\*First Name:   
\*Last Name:   
Title:   
\*Company:   
\*Address:   
  
\*City:  \*State/Region:   
\*Post/Zip:  \*Country:   
\*Phone:  Fax:   
\*E-mail:

\* Fields marked with asterisk ( \* ) are **required**.  
Please note that the license will be emailed to the address above, so it must be valid.



Clear Form

Hacer clic en Aceptar en el siguiente mensaje:



Entonces, aparecerá una pantalla con el siguiente texto:



## ModelSim™ Xilinx Edition - Starter License Request

Your request has been submitted, thank you! Your ModelSim XE Starter license will be e-mailed to you at [fernando.santosl@estudiante.uam.es](mailto:fernando.santosl@estudiante.uam.es) within a few minutes.



**Note:** Your license will be sent by email from [mxe\\_distribution@xilinx.com](mailto:mxe_distribution@xilinx.com). The license will be attached as `license.dat`. If your mail server or client enforces spam blocking, you must arrange for this mail to pass in order to receive your license.

The free STARTER product has lower performance than the **purchased** VHDL or VLOG versions. You may ignore messages about 'Warning: A ModelSim starter license was detected'. For detailed information, please visit solution record number 15558 at <http://support.xilinx.com> or click on [15558](#)

Your license is being generated based on the information that you have supplied, shown below. Please print this page for a record of your request. If you do not receive your license within two working days or you would like to expedite your request, please contact Xilinx Customer Service. In the U.S., customers can contact Customer Service at [cs\\_1@xilinx.com](mailto:cs_1@xilinx.com) or by phone at 1-800-624-4782. Non-U.S. customers should contact their local distribution partner.

**19.** Tras unos minutos, recibiremos un correo electrónico con el fichero *license.dat* adjunto, que es nuestra licencia para ModelSim, y las instrucciones para instalarla (en inglés).

`Congratulations on your licensing of an MXE product.  
You are only a few steps away from leveraging the benefits of HDL  
Simulation in your design flows.`

`To license the ModelSim XE product, please follow these steps:`

- `1) Save the attached file to your hard drive, noting its location.`
- `2) Run the "Licensing Wizard" program from within the ModelSim XE program group.`
- `3) Using the Licensing Wizard, specify the location of the saved license file.`
- `4) Optionally, allow the Licensing Wizard to Modify your FlexLM environment variable and reboot your machine to complete the license installation process.`

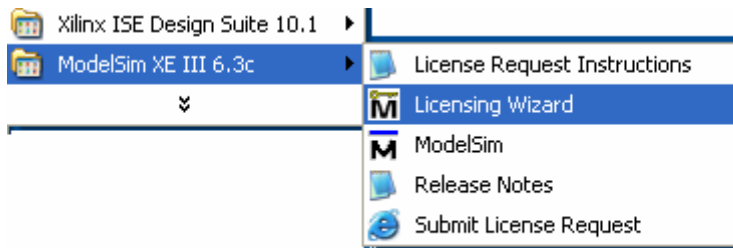
`In order to authorize properly, the license.dat saved file should have in it a single line that begins with "FEATURE".`

`If you need help getting a license, contact Xilinx Customer Service by sending an email to mxe\_license@xilinx.com`

`For technical assistance getting started with MXE, please review the MXE Tech Tip at:  
http://www.support.xilinx.com/xlnx/xil\_tt\_home.jsp`

Estas instrucciones se resumen en:

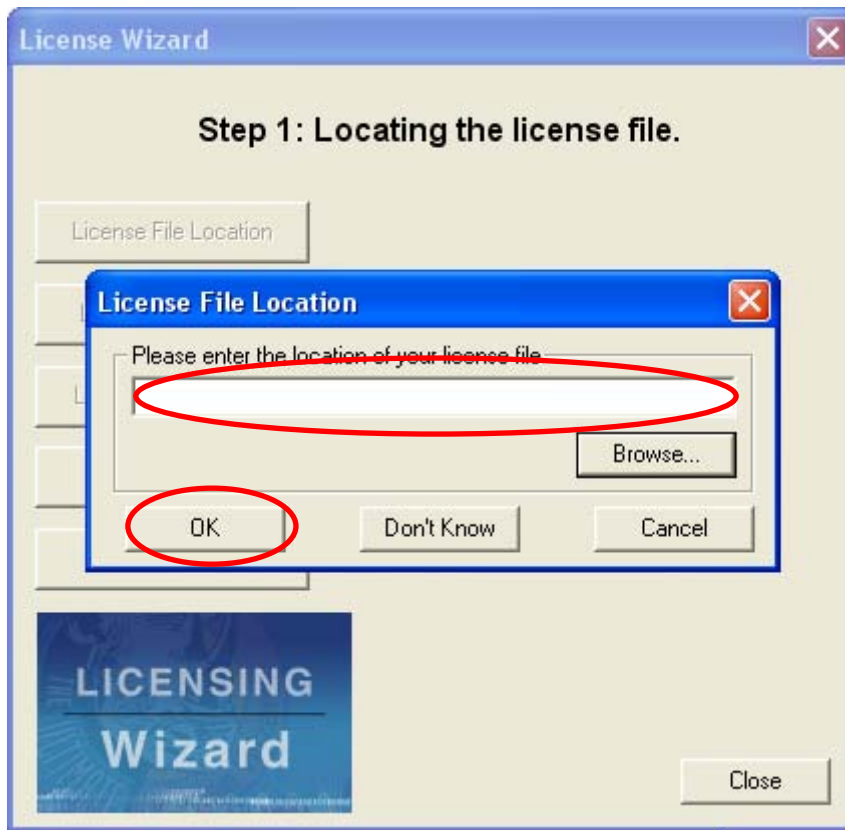
- Salvar el fichero de licencia al disco duro.
- Ir a “Inicio” en Windows, ModelSim XE III 6.3c, Licensing Wizard.



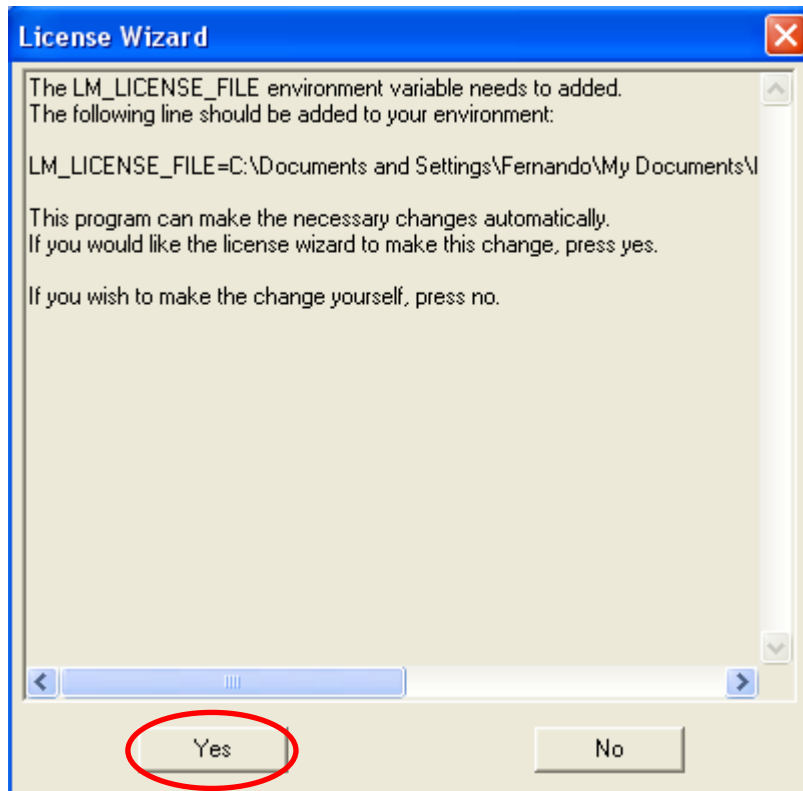
Aparece la siguiente pantalla. Hacer clic en *Continue*.



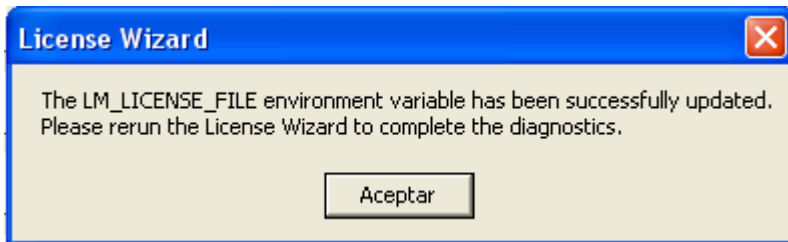
Indicar en esta herramienta la localización del fichero *license.dat* y dar *OK*.



Elegir *Yes* y *Aceptar*.



Aparecerá un mensaje informando de que todo ha salido bien:



Ya está configurada la licencia de ModelSim y debería funcionar.

---

Autores:

Gonzalo Pérez Crespo y Ángel de Castro Martín (Febrero 2007)

Fernando Santos Lorenzo y Ángel de Castro Martín (Febrero 2008)

Juan Cueto Rodríguez (Febrero 2009)